



ANNUAL REPORT

Advancing Access, Equity, and Impact

2024-25





ANNUAL REPORT

Advancing Access, Equity, and Impact

2024-25

About The Hans Foundation

Compassion in Action

The Hans Foundation (THF) is a public charitable trust working to create equitable access to health, education, livelihoods, disability inclusion, and climate action across India. Guided by the belief that compassion must translate into measurable impact, THF designs and supports interventions that address both immediate needs and long-term systemic change.



Since its inception in 2009, the foundation has reached 53 million people across diverse geographies - from the villages to peri-urban and urban settlements, bringing essential services to those who have long remained on the margins. Over the years, its approach has evolved from direct implementation to a model rooted in convergence, partnerships, and sustainability.

Working alongside government bodies, corporates, and civil society organizations, THF builds scalable solutions that strengthen public systems while empowering communities to become active participants in their own development. Each program is designed not only to serve but to enable creating lasting structures of care, opportunity, and resilience.

Preface

15 Years of compassion in action and the effort continues

Fifteen years ago, The Hans Foundation (THF) began its journey with a simple yet powerful promise to bring care closer to those who need it the most. What began as a humble effort rooted in compassion has evolved into a nationwide mission of service and inclusion, reaching millions across India.

From remote villages to underserved urban settlements, THF's presence today stands for reliability, dignity, and hope. Each step of this journey has been shaped by one guiding belief: that development must not only reach people but also respect their lived realities.

In 2024–25, this commitment deepened further. Through health on wheels,

classrooms alive with learning, women building livelihoods, and villages restoring their forests and water sources, THF's work transitioned from delivering services to strengthening systems, ensuring communities emerge not as recipients but as equal partners in progress.

Marking its fifteenth year, the foundation reaffirmed that compassion is not a milestone but a continuum. The early years of direct service have laid the foundation for collaborative models powered by technology, government partnerships, and community participation, creating sustainable pathways for health, livelihoods, education, climate action, and inclusion across India.



Vision

To create an equitable society where every individual has the opportunity to live with dignity and purpose.

Mission

To empower underserved communities through sustainable programs in health, education, livelihoods, disability inclusion, and climate action, ensuring that no one is left behind.



CONTENTS



10

Health and Community Well-being



34

Education and Child Development



46

Livelihoods & Women's Empowerment



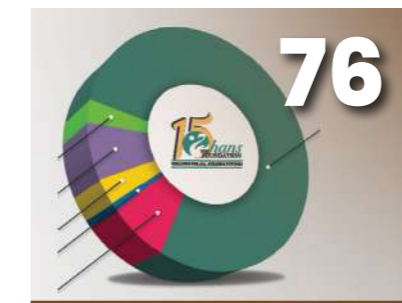
58

Water Resilience and Climate Action



66

Disability and Inclusion



76

Financial Review



82

Looking Ahead



84

Acknowledgements

Health and Well-being

Care That Travels Further

For The Hans Foundation (THF), health is not a service but a promise - a commitment to ensure that care reaches even the most remote corners of the country. In 2024–25, the foundation deepened its approach to community health through a network of mobile, fixed, and specialized interventions designed to bring equity, accessibility, and dignity into healthcare delivery.



Mobile Medical Units Health on Wheels

Each van that sets out from a departure point carries more than medicines; it carries trust. The Hans Mobile Medical Units (MMUs) continued to serve as lifelines by taking services at the door steps for thousands of families living beyond the reach of the hospitals and health posts. In FY 2024–25, the MMUs provided regular consultations, screenings, and essential medicines to communities across 10 states, ensuring that early detection and timely care became the new normal for those once left behind.



Each MMU is equipped as a mini primary health clinic on wheels, staffed by a doctor, nurse, pharmacist, and community mobilizer.



EACH MMU IS EQUIPPED TO OFFER



Basic diagnostic equipment
BP monitors, haemoglobin
testing, etc.



Essential medicines
and
First-aid supplies



Follow-up care
and counselling for
chronic conditions



NCD screening
for hypertension
and diabetes

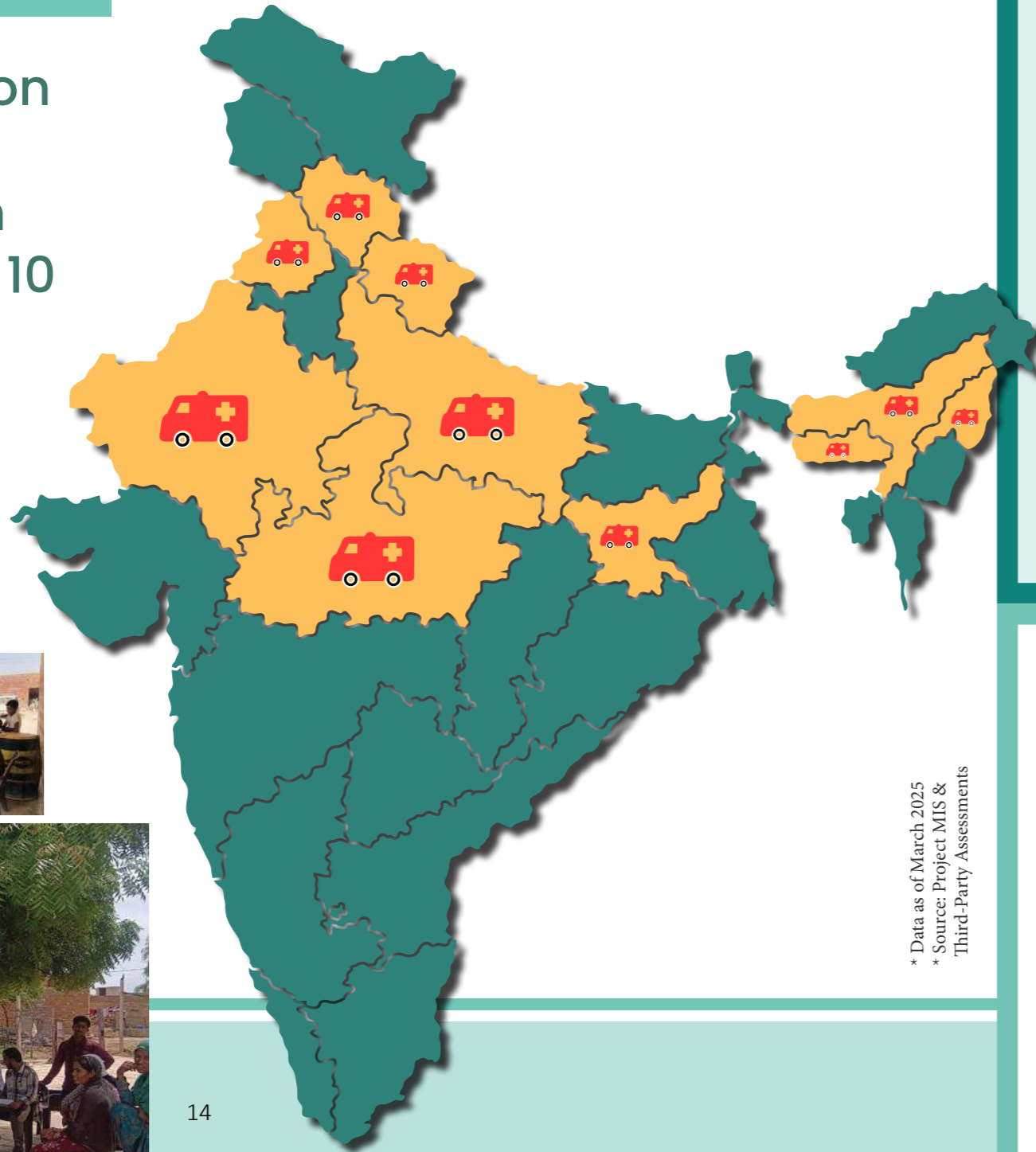


Pathological
tests



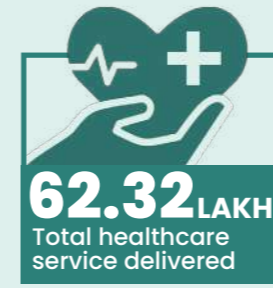
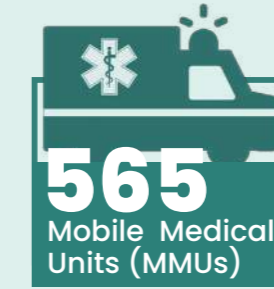
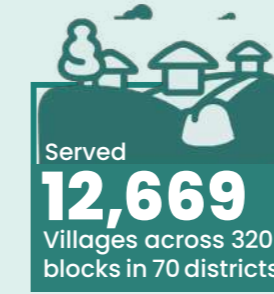
Referral linkages to nearby
government facilities where
higher-level care is needed

The Hans Foundation (THF) MMUs have touched more than 31 lakh lives across 10 states

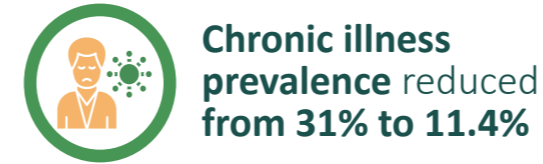


* Data as of March 2025
 * Source: Project MIS & Third-Party Assessments

Reach



Impact



Lives We Touch

Eighteen-year-old Ranika Oraon from Jilingda village, Saraikela Kharsawan district in Jharkhand had been suffering from Functional Neurological Disorder (FND) for six months without treatment due to financial hardship. During a health awareness camp at the Mega Skill Centre in Jamshedpur, THF's Mobile Medical Unit provided immediate diagnosis, medication and counselling support. Rani's condition improved significantly - she regained normalcy, confidence, and resumed her training with renewed enthusiasm.

“I had lost hope because my family couldn't afford treatment. The doctors and team from The Hans Foundation helped me recover and I feel confident again.”

— Ranika Oraon, Trainee, Mega Skill Centre Jamshedpur



The Hans Foundation Hospitals

Anchors of Care in Uttarakhand

The Hans Foundation (THF) Hospitals in Uttarakhand stands as the foundation's flagship institution of compassion and quality. Established to bridge the healthcare gap in the hill regions, they combine modern medical infrastructure with a deeply human approach to care. Together, the General Hospital at Satpuli and the Eye Care Centre at Haridwar form the backbone of THF's institutional health system- offering affordable, high-quality, and inclusive care to tens of thousands of patients each year.



General Hospital, Satpuli (Pauri Garhwal)

The Hans Foundation (THF) General Hospital in Satpuli continued to evolve as a multi-specialty hub catering to the medical needs of hill and rural populations. The 200-bed hospital now offers comprehensive services in general surgery, orthopaedics, obstetrics and gynaecology, paediatrics, ophthalmology, dental care, anaesthesia, and emergency medicine.

The Satpuli facility also deepened collaboration with community-based health programs and THF's mobile health units, ensuring that patients in remote villages could seamlessly access advanced care when required.



Eye Care Centre, Haridwar

The Hans Foundation (THF) Eye Care Centre in Haridwar marked another year of impactful expansion. What began as a dedicated eye hospital has now transformed into a 100-bed multi-specialty institution offering services in ophthalmology, general surgery, internal medicine, ENT, orthopaedics, radiology, pathology, and critical care.

In 2024–25, the Centre continued to strengthen its outreach through a hub-and-spoke model connecting peripheral vision centres across Uttarakhand and neighbouring states. Thousands of patients benefited from cataract and other ophthalmic surgeries, with new sub-specialties introduced to enhance clinical capacity. The hospital's patient assistance and free surgery programs ensured that individuals from low-income and remote communities received care without financial hardship.



THF Clinic, Kotdwar

Strengthening referral and follow-up systems, The Hans Foundation (THF) Clinic in Kotdwar serves as a vital bridge between communities and tertiary facilities. In 2024–25, the clinic provided routine consultations, counselling, and rehabilitation support while facilitating timely referrals to Satpuli and Haridwar hospitals for specialized interventions.

The clinic has become an important touchpoint for continuity of care, ensuring that the path from screening to recovery remains accessible and patient-focused.



Hans Renal Care Centres

Affordable and Dignified Dialysis Services

Dialysis remains one of the most unaffordable and inaccessible forms of treatment for low-income households, often forcing families into cycles of debt, interrupted care, and emotional stress. Recognising this critical gap, The Hans Foundation (THF) established Renal Care Centres to ensure that individuals living with chronic kidney disease can access consistent, quality care without financial burden.

The Centres operate on a model that prioritises patient dignity, comfort, and long-term continuity of treatment. Each facility is equipped with modern

dialysis machines, water purification systems, emergency care support, and infection control protocols, ensuring care that meets clinical standards. Trained medical staff, dialysis technicians, and nurses work together to provide not just treatment, but compassionate support tailored to each patient's need.

Beyond clinical services, the centres work to extensively reduce out-of-pocket expenditure by minimizing treatment costs and offering counselling for nutrition, lifestyle adjustments, and ongoing disease management. Families are guided to better understand their care pathways and supported in staying consistent with treatment, a critical factor in improving quality of life.

Through this approach, The Hans Foundation Renal Care Centres have helped restore agency, stability, and hope for patients and their families- ensuring that care is not only available, but affordable and humane.

Lives We Touch

For nearly nine years, Mr. Dilbagh Singh lived with chronic kidney disease, undergoing dialysis at multiple centres but experiencing unstable health and persistently high parathyroid hormone levels that increased his risk of bone and heart complications. His condition made it difficult for him to be considered for a kidney transplant.

After transitioning his care to the Hans Renal Care Centre at PGIMER Satellite Sangrur, Punjab, Mr. Singh's dialysis regimen stabilized under a multidisciplinary care team.

“Here, my treatment feels consistent and careful. My health has improved, and I now have hope of receiving a transplant. This has given me strength to look ahead.”

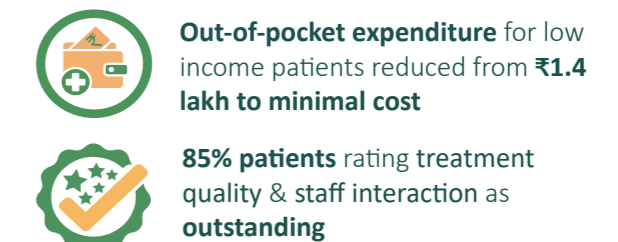
— Mr. Dilbagh Singh



Reach



Impact



Sub-Centres in Meghalaya

Upgrading Primary Healthcare Infrastructure

The upgraded Sub-Centres in Meghalaya are transforming how primary healthcare is accessed in remote and geographically dispersed communities. What were once small and underutilized facilities have been strengthened with improved infrastructure, essential medical equipment, trained staff, and reliable supply systems to ensure consistent service delivery.

These centres now offer antenatal care, basic diagnostics,



maternal and child health services, routine outpatient consultations, and immunisation support, enabling families to receive care within their own communities. This has significantly reduced the need for long-distance travel, lowering both the financial and emotional burden on households.

In addition to clinical services, the Sub-Centres facilitate health awareness sessions, follow-ups for chronic conditions, and referral linkages for more advanced treatment when required.

By bringing healthcare closer to people's homes, the Sub-Centres are evolving into trusted community health hubs, strengthening early detection, preventive care, and overall well-being across rural Meghalaya.

Reach



Impact



Lives We Touch

In Amjong village, Ri Bhoi district in Meghalaya, serving nearly 4,500 people, three mothers initially refused antenatal care services and child immunization due to fear, past negative experiences, and community misconceptions.

Through consistent home visits, counselling, and patient dialogue, THF team gradually built trust, dispelled myths, and emphasized the importance of vaccination and maternal health.

Today, all three mothers are registered for ANC check-ups, receiving their vaccinations, and ensuring timely immunization for their children - a powerful example of how empathy and persistence can transform health-seeking behaviour.

“We were scared at first, but The Hans Foundation team kept explaining and visiting us. Now we understand the importance and take our vaccines, and our children are also getting immunized.”

— Mother from Amjong village



Primary and Community Healthcare Centres

Primary and Community Healthcare Centres are the foundation of rural health systems, providing essential services close to where people live. The Hans Foundation (THF) strengthens these centres by improving infrastructure, staffing, diagnostics, and medicine availability, ensuring consistent and dignified care.

Primary Health Centres (PHC) across six states, deliver outpatient care, maternal and child health services, immunisation, and health education. Community Health Centres (CHCs) act as referral units offering more advanced and emergency care.



Lives We Touch

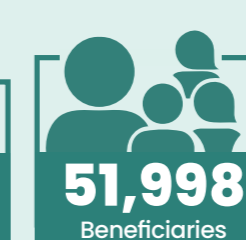
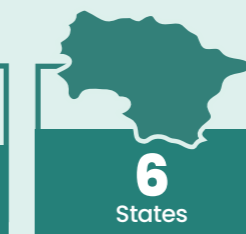
Elderly villagers in rural Jharkhand often suffer from hypertension and skin infections, worsened by poor hygiene and limited access to medical care. When 70-year-old Haidar Ali from Hurhuri village, Ranchi district began regular visits to PHC Ushamatu, timely treatment and counselling helped control his blood pressure and improve awareness about hygiene and diet.

“With regular medicines, my BP is fine now. The doctors guide me patiently every visit, I’m trying to follow their advice to recover completely.”

- Haidar Ali, PHC Ushamtu Beneficiary



Reach



Impact



“Doctors listened carefully”
:98% patients



“Satisfied with the consultation time” :99% patients



“Privacy was respected”
:100% patients

Hans Paediatric Program

Caring for Children, Supporting Families

Healthy children form the heart of healthy communities. Recognizing that a child's well-being shapes the future of families and society, The Hans Foundation (THF) launched the Hans Paediatric Program, a comprehensive initiative dedicated to improving child health and ensuring that every child, regardless of background, has access to quality medical care.

Under this umbrella initiative, several focused programs are implemented, including the Little Hearts Program for children with congenital heart defects and the Cochlear Implants Program for those with congenital profound hearing loss. The program also supports treatment in Neonatal and Paediatric Intensive Care Units (NICU and PICU), as well as care for children battling cancer, blood disorder and epilepsy treatment.

Beyond treatment, the initiative emphasizes a family-centred approach, providing counselling, health education, and ongoing guidance to parents and caregivers. By combining compassion with quality care, the Hans Paediatric Program continues to give thousands of children a renewed chance at health, happiness, and a brighter future.

Lives We Touch

In Kulikarai village, Thiruvaur, Tamil Nadu, a 5-month-old baby with congenital heart disease struggled for survival as his lips and skin turned blue from lack of oxygen. His father, a driver, could do little but watch in fear. Seeking urgent help, the family travelled to a neighbouring state, where they were connected with The Hans Foundation.

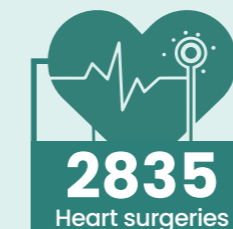
THF quickly arranged life-saving corrective surgery. The successful operation restored not just the child's health but the family's hope for a brighter future.

“Working as a driver in a remote village, I had lost all hope of saving my child. After years of waiting and IVF, he was our miracle. The Hans Foundation gave us our baby back, healthy and smiling.”

— Ramesh, Father of the child



Reach



Impact

Cochlear Implant Program



64% children received implants in the critical **0-3 years** window



Over **80% showed progress** in **listening, cognition and receptive speech**



Strong correlation (r=0.78) established between **early intervention and better outcomes**

Hans Wellness Centers

Child Wellness and School Health Support

A healthy mind and body are the building blocks of a happy childhood. With this belief, our Hans Wellness Centres nurtures the overall well-being of school-going children and helps them grow into confident, healthy individuals.

Partnering with low-income private, NGO-managed, and aided schools, each Hans Wellness centre, established within the school premises offers a safe space for early diagnosis, timely treatment, and primary care for both physical and mental health needs.

A trained team of doctors, nurses and psychologists with the support of multi task workers, conduct regular health screenings, counselling and awareness sessions. Children who need further intervention are guided

through referrals to ensure continuity of care. Alongside clinical services, the centres focus on emotional wellness through counselling and life-skills education. By nurturing healthy habits and positive coping skills early, the Hans Wellness Centres are helping children build resilience, confidence, and a strong foundation for lifelong well-being.



Lives We Touch

Radhika, 16, a high school student, Delhi NCR, was identified during a school screening with signs of mental health struggles. Through THF's Hans Wellness Centre, she received regular counselling and art therapy sessions that helped her express emotions, build coping skills, and strengthen communication. Over time, Radhika's self-confidence and emotional well-being improved with a renewed sense of dignity and hope.

Note: The image of the beneficiary has not been shared as we are upholding confidentiality and adhering to consent requirements.



Reach



Hans Bal Aarogya Karyakaram

Caring for Children Through Timely and Quality Treatment

When illness interrupts childhood, timely care can help restore balance and hope. Since 2017, The Hans Foundation (THF) has been supporting life-saving treatment for children with critical illnesses through the Hans Bal Aarogya Karyakaram. The initiative provides early detection, diagnosis, and treatment support for children with cancer and other severe chronic conditions through empaneled medical institutions.



Working closely with the Rashtriya Bal Swasthya Karyakram (RBSK), the program ensures timely screening and referral of children from District Early Intervention Centers. Treatment is facilitated through a reimbursement model aligned with

Government Health Scheme protocols, ensuring that financial constraints do not interrupt ongoing care.

In this phase, the program continues to support children already under treatment, ensuring continuity, dignity, and compassionate care throughout their recovery journey.



Char Dham Yatra Health Screening Kiosks

Safeguarding Pilgrims on Their Spiritual Journey

For many pilgrims, the Char Dham Yatra is not only a sacred journey but also a physically demanding one, where high altitudes and steep terrains can pose health challenges.

To enhance safety and prevent medical emergencies, The Hans Foundation (THF), in collaboration with the Health Department of Uttarakhand, established 50 Health Screening Kiosks along key yatra routes. These kiosks provided quick screening of vitals including blood pressure, oxygen saturation, and heart rate, enabling early identification of potential risks and timely referral to medical facilities when needed.

By making preventive screening easily accessible, the initiative strengthened on-route medical preparedness and contributed to a significant reduction in health-related incidents during the yatra season. It stands as an example of how thoughtful, community-focused health support can protect lives even in challenging terrains.



* Data as of March 2025
* Source: Project MIS & Third-Party Assessments
* Project duration: April 2024 - March 2025

Suposhit Maa Abhiyaan

Nutrition forms the foundation of maternal and child well-being. Suposhit Maa Abhiyaan, implemented in Kota and Bundi, Rajasthan, focuses on improving the nutritional status of pregnant and lactating women with low body weight and limited access to services. Identified beneficiaries receive a monthly 17-kg ration of nutrient-rich food throughout pregnancy and lactation, ensuring consistent dietary support during critical stages of growth.

Through this approach, the program helped reduce malnutrition and promote healthier pregnancies and birth outcomes.



Reach



3000
Pregnant
women

* Data as of March 2025
* Source: Project MIS & Third-Party Assessments
* Project duration: April 2024 - March 2025

Education and Child Development

Learning That Lasts a Lifetime

Education lies at the heart of The Hans Foundation's (THF) belief that opportunity begins with access. In 2024–25, the foundation strengthened its commitment towards inclusive and equitable education for children from underserved communities - ensuring not just schooling but learning that transforms futures. Through a combination of community-based interventions, digital innovations, and partnerships, THF is working to make every child's right to education a lived reality.

Additionally, education for THF goes beyond classrooms. It is about enabling children to imagine, explore, and lead. Each child who returns to school or learns to read the first sentence stands as a living proof of what inclusion in action looks like.



Hans Learning Centres

Learning that Begins with Belonging

The Hans Learning Centres (HLCs) - a cornerstone of THF's education initiative, supporting foundational literacy, numeracy, and life skills. These centres offer a safe and nurturing environment for children who dropped out of school or were at risk of doing so. Teachers, trained in participatory and inclusive methods, focus on bridging learning gaps while encouraging curiosity and creativity.



In 2024-25, the HLCs effort reached 409 students, bringing them back into the education system and strengthening their transition into mainstream schools.



* Data as of March 2025
* Source: Project MIS & Third-Party Assessments

Hans Vriksh Education Program

Education is the seed from which opportunity and empowerment grow. With this belief, the Hans Vriksh Education Program, a strategic initiative to strengthen the quality and inclusivity of education in government schools was launched.

The program works to bridge learning gaps, reduce gender disparities, and address socio-economic challenges that often hinder children’s education. By improving infrastructure, promoting gender equality, and fostering community awareness, the initiative ensures that every child, regardless of background, has access to an enriching and equitable learning environment.

Aligned with the vision of the National Education Policy (NEP) and Pradhan Mantri Schools for Rising



Lives We Touch

In Assam’s tea garden communities, many children struggle with limited access to quality education, leading to foundational learning gaps and early dropouts.

At the Arun Tea Estate, Elan Tanti, a young graduate from the tea tribe community, volunteers as a Community Based Learning Centre (CBLC) educator. Through supplementary learning sessions and regular engagement with parents, he has helped strengthen children’s confidence and improve their learning levels.



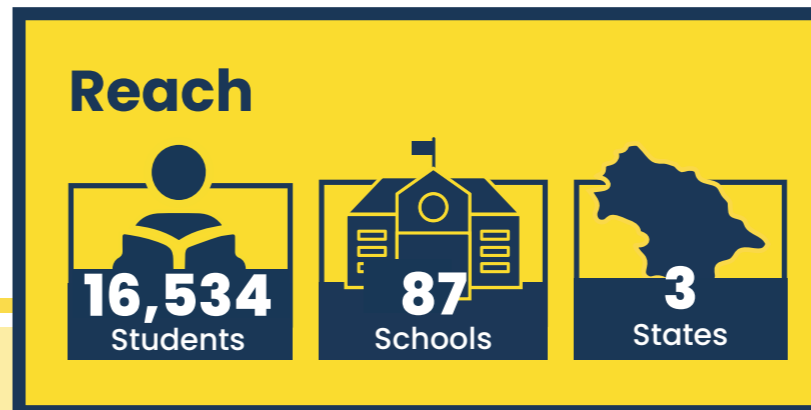
“Being part of the CBLC has given me purpose and pride. It is fulfilling to see children gain confidence and enjoy learning.”

— Elan Tanti, CBLC Volunteer



India (PM SHRI) guidelines, the Hans Vriksh Project adopts a holistic approach to education, one that nurtures both academic excellence and personal growth.

Currently being implemented across three states in collaboration with the respective State Education Departments, the project continues to plant the seeds of transformation, empowering schools, teachers, and students to create a brighter and more inclusive future.



* Data as of March 2025
* Source: Project MIS & Third-Party Assessments

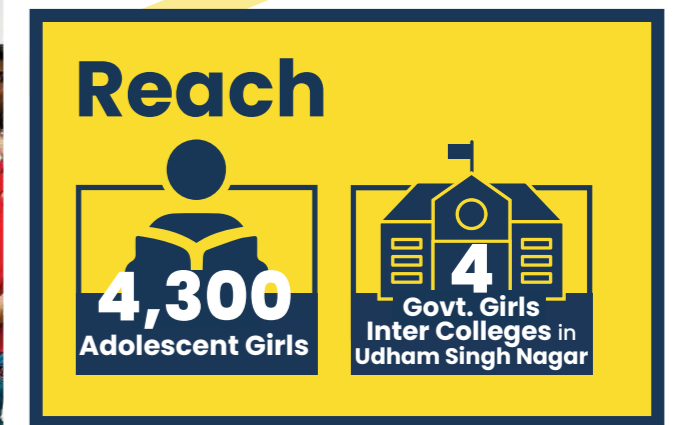
Titan Kanya+ Initiative

Strengthening Confidence, Voice, and Opportunity

Classroom in Titan Kanya+ begins with encouragement, where girls are supported to speak, question, express, and lead in their own ways.

In partnership with Titan Company, the Titan Kanya+ initiative focused on adolescent girls' of senior and senior secondary class on education, leadership, and empowerment. The program addressed barriers that prevent girls from staying in school- from inadequate facilities to gender norms- and fostered an environment of safety, participation, and voice.

In 2024–25, Titan Kanya+ reached 4300 adolescent girls across 4 government girls inter-colleges of Udham Singh Nagar district, combining classroom learning with life skills, digital awareness, career guidance, and menstrual hygiene education. The initiative stands as a testament to how partnerships can drive transformative social change at scale.



* Data as of March 2025
 * Source: Project MIS & Third-Party Assessments

Sewa Bharti Balwadi Initiative

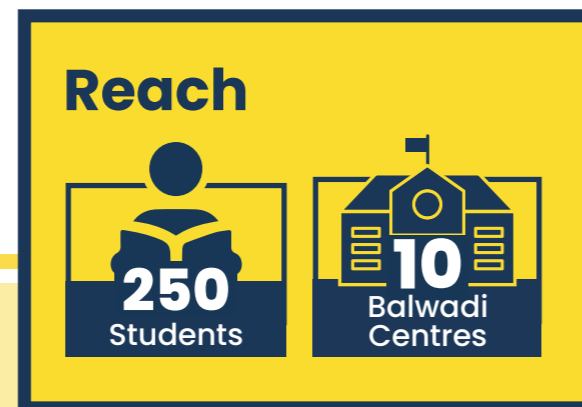
Strengthening Early Childhood Learning Environments

The Hans Foundation (THF), in collaboration with Sewa Bharti, supports early childhood education for young learners aged 3 to 6 from the marginalized communities. The initiative has enhanced 10 Balwadis in Delhi NCR by creating child-friendly spaces equipped with digital learning tools, teaching materials, and development-focused activity resources.

Each Balwadi is facilitated by trained educators who use play-based and experiential learning approaches to support early language development, numeracy, motor skills, and social confidence. Regular parent engagement sessions encourage learning continuity at home, while continuous review and



monitoring processes help maintain program quality. The Hans Foundation provides training, resource support, and program oversight, while Sewa Bharti contributes community mobilization, classroom spaces, and administrative support. Together, the initiative fosters nurturing early learning environments that help children build curiosity, confidence, and a joyful relationship with learning.



Hans Nayi Disha

Holistic Pathway to the Right to Education

Hans Nayi Disha learning centre provides foundational education to children from underprivileged communities in Gurgaon, helping them build the confidence and skills needed to enter mainstream schools. The learning centre offers quality learning across English, Hindi, Mathematics, Computer Science and Environmental Studies, with flexible class placement based on each child's readiness and capabilities. A committed team of teachers and staff works closely with parents to support consistent academic progress.

The initiative strengthens overall development through mid-day meals, creative activities, physical education and regular field visits that broaden children's exposure and interests. Health check-up camps conducted by qualified doctors ensure routine



assessments and guidance on hygiene and well-being. Hans Nayi Disha's focus on holistic development nurtures each child's physical, emotional and cognitive growth. By creating a safe and inclusive environment, the initiative helps children discover their strengths and prepares them to thrive in formal schooling and beyond.



* Data as of March 2025
* Source: Project MIS & Third-Party Assessments

Sewa Dham Vidya Mandir School

Expanding Learning, Well-Being, and Opportunities

The Sewa Dham Vidya Mandir school offers students a stable environment where learning, well-being, and daily life come together with a sense of belonging.

The Hans Foundation (THF), in partnership with Sewa Bharti, supports 317 students in grades 6 to 12 through academic enhancement, nutritional support, and co-curricular development. The program provides subject-specific educators along with coaching in sports, yoga, art, and performing arts, enabling students to strengthen both academic understanding and personal confidence.



For students residing in the hostel, the initiative also ensures balanced nutrition and regular health check-ups, supporting physical and emotional well-being. Sewa Dham Vidya Mandir school leads the day-to-day school and hostel operations, and THF strengthens the program through expert teachers, learning resources, sports and training for staff.

Together, the collaboration nurtures an encouraging and inclusive school environment where students are supported to learn, participate, and grow with dignity.



* Data as of March 2025
* Source: Project MIS & Third-Party Assessments

Livelihood and Women Empowerment

Supporting Skill to Build Futures

The Hans Foundation's (THF) livelihood initiatives continue to shape pathways of sustainable economic resilience and dignity across rural India. In 2024–25, THF focused on building skills, supporting enterprise creation, vocational training, financial literacy, and strengthening women's leadership in local economies.

Livelihoods are more than a means of survival; they are the expression of self-reliance and hope. Through every enterprise launched and every skill acquired, THF continues to stand beside individuals as they build a better future with their own hands.

Hans Livelihood Program

Building Economic Resilience Through Skills, Enterprise, and Community Strength

The Hans Livelihood Program continues to nurture pathways of economic independence and dignity across five states, placing individuals and communities at the centre of the progress. Rooted in the belief that livelihoods are not just a source of income but a foundation for stability and hope, the program enables people to harness their skills, improve productivity, and participate more fully in the local economy.

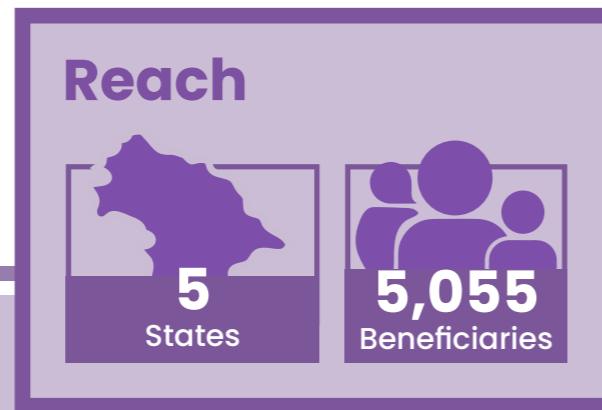




On-farm interventions such as vegetable cultivation and fruit orchards help farmers enhance productivity, and adopt climate-resilient practices. Complementing this, a wide range of off-farm activities, including mushroom farming, poultry, goatery, piggery, and lac cultivation enable families to diversify their incomes and build reliable, year-round livelihoods.

Through a combination of skill development, enterprise promotion, farm-based interventions, and women-led economic initiatives, the program supports communities in strengthening their everyday economies.

Across five states, thousands of individuals are shaping futures grounded in self-reliance, local knowledge, and collective progress.



* Data as of March 2025
 * Source: Project MIS & Third-Party Assessments

Hans Udhyamita Mission

Growing Local Enterprises and Everyday Economies

Across villages in Uttarakhand, many individuals carry skills that form the backbone of local economies. The Hans Udhyamita Mission supports these individuals in transforming their skills into sustainable small and micro-enterprises through training, financial awareness, and access to market opportunities.

Working in collaboration with the Government of Uttarakhand, the program provides advisory support, technical assistance, and personalised business plans developed with domain experts. The initiative helps them build income sources while strengthening their confidence in self-employment.



As part of financial awareness and support, the program facilitates linkages with financial institutions and organizes loan fairs to improve access to credit. Training and mentoring sessions guide entrepreneurs in identifying market opportunities, managing operations, and developing communication and soft skills. The Program also works with the Ministry of Micro, Small & Medium Enterprises (MoMSME) support systems, and banking partners to enable smooth loan disbursement and long-term financial planning.

In 2024–25, the Mission reached 877 individuals across Uttarakhand, with a large share of enterprises led by women. These enterprises span agriculture, food processing, tailoring, eco-friendly crafts, and other small-

scale local industries, strengthening income security within households and communities.

The Hans Udhyamita Mission reinforces livelihood is rooted in local knowledge, resourcefulness, and the aspiration to build economic independence close to home.



* Data as of March 2025
 * Source: Project MIS & Third-Party Assessments

Reach

- 877 Beneficiaries
- 75 Villages
- 6 Districts

Hans Holistic Rural Development Project (HRDP)

Development Rooted in Participation and Place

The Hans Foundation (THF), in collaboration with HDFC Bank, is implementing the Hans Holistic Rural Development Project (HRDP) in rural Gurugram, Haryana. The initiative brings together agriculture, water management, health, education, and livelihood development into an integrated model that responds to the everyday realities of village life. By encouraging collective participation and shared ownership, the project strengthens local economies and improves the ability of households to manage and adapt to change.



Lives We Touch

In Kurkhyal village, Pauri Garhwal, Uttarakhand agriculture had nearly come to a halt due to wild animal damage, lack of quality seeds, climate challenges, and limited technical knowledge.



Through THF's Livelihood Project, a group of eight women farmers received high-quality tomato seeds and training in scientific cultivation. Together, they cultivated one hectare of land, planted 2,550 saplings, and sold 6,649 kg of tomatoes, earning ₹1,99,470 in just 3–4 months.

“Even though heavy rains damaged half our crop, we still earned nearly ₹2 lakh because of the training we received. It gave us confidence that farming can be profitable despite the weather challenges.”

— Mrs. Santoshi Devi,
 Chairperson, Producer Group

A key focus of the initiative is to support farmers, improve yields, and reduce dependency on unpredictable weather patterns. Training sessions guide farmers in vegetable cultivation, nursery development, livestock care, and mushroom production, enabling them to diversify and stabilize their livelihoods throughout the year. Farmer groups are being formed and strengthened, helping individuals learn together, share knowledge, and engage more confidently in market systems. These efforts contribute to healthier crops, improving incomes, and stronger solidarity within farming communities.

The project also supports improvement of Anganwadi Centres' infrastructure, creating better environments for young learners. In parallel, community health camps and awareness drives help families access timely medical guidance and adopt healthier practices, while



hygiene promotion activities support community well-being. Environmental sustainability is being nurtured through local initiatives focused on conservation, responsible water use, and horticulture development, which encourage households to grow region-appropriate fruit and vegetable crops and reduce input costs.

Together, these strands form a holistic approach to development that recognises the interconnectedness of livelihoods, health, education, and the environment. The Hans Holistic Rural Development Project (HRDP) demonstrates how communities, when supported with knowledge, resources, and confidence, can drive their own progress and shape resilient and sustainable futures.



Reach



* Data as of March 2025
* Source: Project MIS & Third-Party Assessments

Shivansh Kheti Regenerative Farming Rooted in Local Knowledge

Shivansh Kheti draws from long-standing agricultural wisdom to restore soil fertility and reduce dependence on chemical inputs. The method uses a composting technique that farmers can prepare at home using locally available materials, making it highly cost-effective and adaptable across rural communities. Over time, this approach helps revive depleted soil, improves moisture retention, and supports healthier crops with minimal external inputs.



Training sessions and field demonstrations offered through the program guide farmers on preparing the compost, improving soil structure, and integrating natural practices into their cropping cycles. Many farmers who adopt Shivansh Kheti report reduced cultivation costs and more stable yields, particularly in areas affected by fluctuating rainfall and soil degradation. The initiative also contributes to the production of nutritious, chemical-free food, strengthening both household wellbeing and ecological balance.

By encouraging farmers to value and apply traditional knowledge in a contemporary context, Shivansh Kheti supports rural livelihoods that are more sustainable, resilient, and grounded in care for the land.

Capacity Enhancement of Rural Artisans (CERA) Initiative

Crafted with Skill, Sustained with Dignity

The CERA project empowers artisans, particularly women, in Himachal Pradesh and Uttarakhand. Through training, design innovation, and improved market access, the program helps artisans move beyond subsistence incomes toward sustainable enterprises.

In FY 2024–25, CERA worked with 1165 artisans, linking them to fair markets and enhancing collective bargaining power. The initiative not only revived traditional crafts but also turned them into sources of modern livelihood and pride.



* Data as of March 2025
* Source: Project MIS & Third-Party Assessments

Reach

1,560
Beneficiaries

2 Districts
50 Villages
in Himachal Pradesh

Hans Gaushala Support Care and Shelter for the Animals

The Hans Gaushala initiative focuses on the care and wellbeing of cattle, particularly cows that are abandoned, elderly, or recovering from illness. The program supports sustainable systems for shelter management, balanced nutrition, veterinary care, and daily maintenance. The dedicated shelter spaces ensure that healthy cattle and those under treatment receive appropriate attention, regular health check-ups, and vaccination support to prevent disease and promote recovery.

A trained team of caregivers and veterinary staff conducts animal health camps across Delhi and NCR, providing treatment, first aid, and free medicines to cattle owners. Rescue and ambulance services are also made available, enabling timely transport of injured animals to the Gaushala or referral hospitals where they can receive continued care. During recovery, cattle are

provided with a balanced diet, including nutritional supplements that support healing and productivity.

During the financial year 2024–25, 21 free veterinary camps were conducted, offering treatment to 5,107 animals. Alongside these camps, the team consistently rescued abandoned and severely injured cattle. In total, 51 animals were rescued over the course of the year.



Water Resilience and Climate Action

Nurturing Earth, Securing Tomorrow

Communities thrive where nature thrives. For The Hans Foundation (THF), conserving natural resources is inseparable from protecting livelihoods and health. In 2024–25, the foundation

continued to work with local communities to restore water sources, prevent forest fires, and promote sustainable practices that safeguard both people and the planet.



Forest Fire and Mitigation Program

Working with Nature, Caring for the Land

In many hillside villages, the forests are not just landscapes but living heritage, deeply tied to identity, livelihood, and memory. In the forested regions of Uttarakhand and Himachal Pradesh, The Hans Foundation’s Forest Fire Prevention and Mitigation Program plays a vital role in addressing one of the most destructive ecological threats: forest fires.

Studies indicate that most forest fires are caused by human activity, making prevention and community awareness essential to safeguarding biodiversity and local ecosystems. To tackle this challenge, the program adopts an integrated approach that combines preventive measures, community engagement, and rapid response.



Lives We Touch

In Gwaldey village, Bageshwar, Uttarakhand repeated forest fires endangered both livelihoods and ecosystems. Beena Devi, a volunteer firefighter led from the front - mobilizing villagers, organizing awareness meetings, and forming volunteer firefighter groups through THF’s Mitigation and Prevention of Forest Fire Project.

Even after sustaining injuries while controlling a blaze, she continued to inspire others with her courage and commitment to community safety.

“The Hans Foundation’s work is saving our forests. Awareness about forest fires is vital for our new generation.”
— Beena Devi

In collaboration with the forest department, communities are trained to identify risks and respond effectively before fires spread. Local volunteers, including many women, take the lead in clearing pine needles, creating fire lines, and establishing early alert systems that improve on-ground preparedness.

In addition, the initiative supports reforestation and ecological restoration in areas affected by previous incidents, ensuring long-term environmental recovery.

In 2024–25, the program was implemented across 1700 villages, resulting in a 53.3% percent reduction in fire incidents.

Reach



Impact



53.3% reduction
in fire incidents



70% of frontline
volunteers were
women



57.4% decrease
in
affected forest areas

Hans Jal Dhara Safe Water for Every Home

The Hans Jal Dhara program remains one of the foundation’s most impactful community water initiatives, ensuring consistent access to safe water for households across rural regions of Uttarakhand. Designed to ensure piped water access in all intervention areas, the initiative focused on constructing and rehabilitating water supply systems, storage tanks, and pipelines while ensuring technical expertise for sustained functioning.

Village Water and Sanitation Committees were formed and trained to oversee the maintenance and long-term management of these systems. As a result, households across remote regions gained consistent access to safe drinking water, improving both availability and reliability.



Transforming Lives Through Water Security: Through the Jal Dhara initiative, we are improving health and dignity while enabling women to prioritise income generation and education.



THE HANS FOUNDATION
हंस जलधारा
राजव-गोविका नाम-सुसभल गांव
निर्माण वर्ष-2022-24
टैंक क्षमता-50000 लीटर
चित्तिय सत्योग-द हंस फाउण्डेशन

Reach



Impact



96% of households now receive uninterrupted, quality water supply



Waterborne diseases dropped by 23%



Women saved 1.5 hours daily

* Data as of March 2025
* Source: Project MIS & Third-Party Assessments

Disability And Inclusion

Empowering Every Ability

Inclusion begins with access - to education, therapy, and opportunity. The Hans Foundation's (THF) disability and inclusion initiatives focus on ensuring that Persons with Disabilities (PwDs) receive the support they need to live with dignity, independence, and equal opportunity. Through community-based programs, partnerships with specialized institutions, and innovative solutions like the Mobile Therapy Bus (MTB) and inclusive education models, the foundation is creating pathways for participation at every stage of life.



From early intervention and inclusive classrooms to higher education and employment-linked scholarships, these initiatives reaffirm THF's belief that every individual's potential deserves recognition, support, and space to thrive.

Mobile Therapy Bus (MTB)

Innovation for Access and Inclusion

The MTB project is an innovation rooted in inclusion. In partnership with the National Institute for the Empowerment of Persons with Intellectual Disabilities (NIEPID), the program is dedicated to offering holistic support for individuals with disabilities through early screening, identification, and timely interventions for all age groups. Operating in



DISABILITY AND INCLUSION

Noida, Ghaziabad, Mumbai, Kolkata, Assam, Gurugram and Ajmer, the specially designed mobile therapy units are equipped with advanced assessment tools, therapeutic interventions, and a team of RCI trained professionals. Following the principle of “The Earlier, The Better,” these units reach communities directly, offering timely assessment, rehabilitation, and therapeutic services. Beyond therapy, the initiative empowers parents, caregivers, and community members by raising awareness, promoting inclusion, and reshaping perceptions around disability. It also builds local capacity by training health workers to recognize developmental delays early and connect families to specialized support through the mobile units.



THE HANS FOUNDATION

Lives We Touch

Pooja, 24, from Sadarpur, Noida in Uttar Pradesh lived with a spinal deformity and lower limb weakness that made walking difficult and limited her independence. Also, she did not have a disability certificate and relied on her family for mobility and daily activities.

Through THF’s Mobile Therapy Bus, Pooja received physiotherapy, speech therapy, counseling, and special education support. She was also guided to obtain her UDID disability card, enabling her to access government benefits. With improved strength and confidence, she enrolled in SETU vocational training, where she is learning computer skills and stitching. During Disability Pride Month, she received a motorized tricycle, which now allows her to travel independently.

“With exercises and my new motorized tricycle, I feel active and independent again.”
— Pooja



Reach



17
Buses, vans



6
States



6,062
PwDS

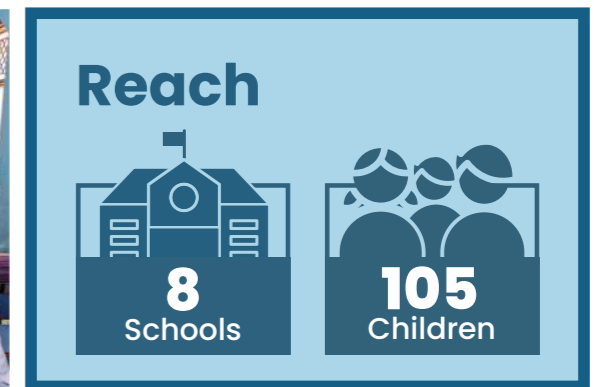
Project Unnati for Inclusive Education

Building School Systems That See Every Child

Every child deserves a chance to learn, grow, and be accepted for who they are. Guided by this belief, The Hans Foundation (THF) launched Project Unnati, an initiative that nurtures inclusive learning environments where children of all abilities, including Children with Disabilities (CwD), can learn together with dignity and confidence.

The project begins with accessibility audits to identify infrastructural and pedagogical gaps for CwDs. Based on these findings, resource centres are established within schools and equipped with assistive and inclusive learning materials. The classes are managed by trained special educators who provide personalized support to children and guide teachers in implementing inclusive practices.

Teacher training is another cornerstone of Unnati. Educators are equipped with inclusive teaching frameworks such as Universal Design for Learning (UDL) and Differentiated Instruction (DI) to address diverse learning needs. Additionally, awareness sessions for school staff and students promote empathy, inclusion in sports and co-curricular activities, and positive social interaction. Through Project Unnati, THF continues to reshape school environments into truly inclusive spaces, where every learner finds equal opportunity, acceptance, and a sense of belonging.



* Data as of March 2025
 * Source: Project MIS & Third-Party Assessments

Early Intervention and Childhood Development Centers

Health, Hope, and a Stronger Start

The earliest years of a child's life lay the foundation for lifelong growth and well-being. From conception onward, children grow and develop rapidly, making early detection and timely care essential.

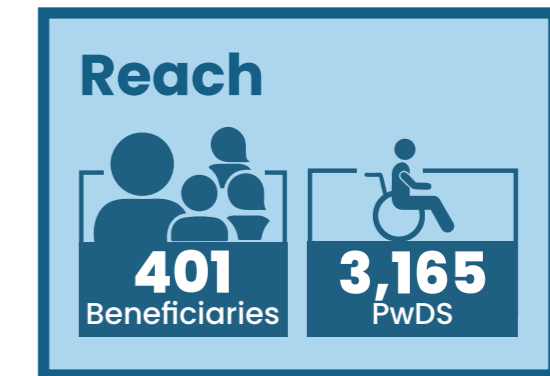
In partnership with AIIMS, New Delhi, and Rajiv Gandhi Maternity and Child Government Hospitals, Puducherry, Hyderabad, The Hans Foundation (THF) has



established specialized centres for early detection and intervention of developmental delays and neurodevelopmental disorders such as Autism, Cerebral Palsy, ADHD and specific learning disabilities.

These centres bring together experts in therapy, education, and counselling to provide holistic care tailored to each child's unique needs. Parents too are supported through guidance and training to continue care at home.

Through this initiative, THF nurtures potential, restores hope, and helps every child move closer to a healthier, more fulfilling future.



* Data as of March 2025
* Source: Project MIS & Third-Party Assessments

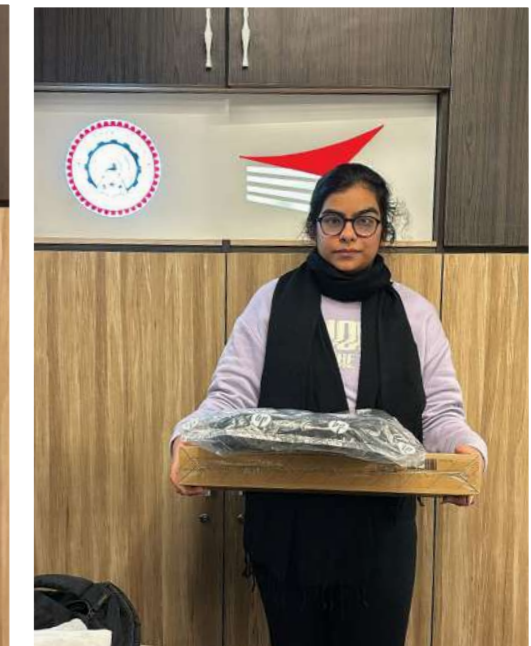
Scholarship for Women and PwD Students at IIT Delhi and IIM Udaipur

Advancing Inclusion in Higher Education

Access to higher education in STEM remains limited for many women and students with disabilities, especially those from low-income households. To address this gap, The Hans Foundation (THF), in partnership with IIT Delhi and IIM Udaipur, introduced a scholarship program that supports deserving learners who face financial or structural barriers. The program with IIT Delhi provides financial assistance, academic resources and a supportive peer environment, enabling 40 scholars to participate fully in STEM education.



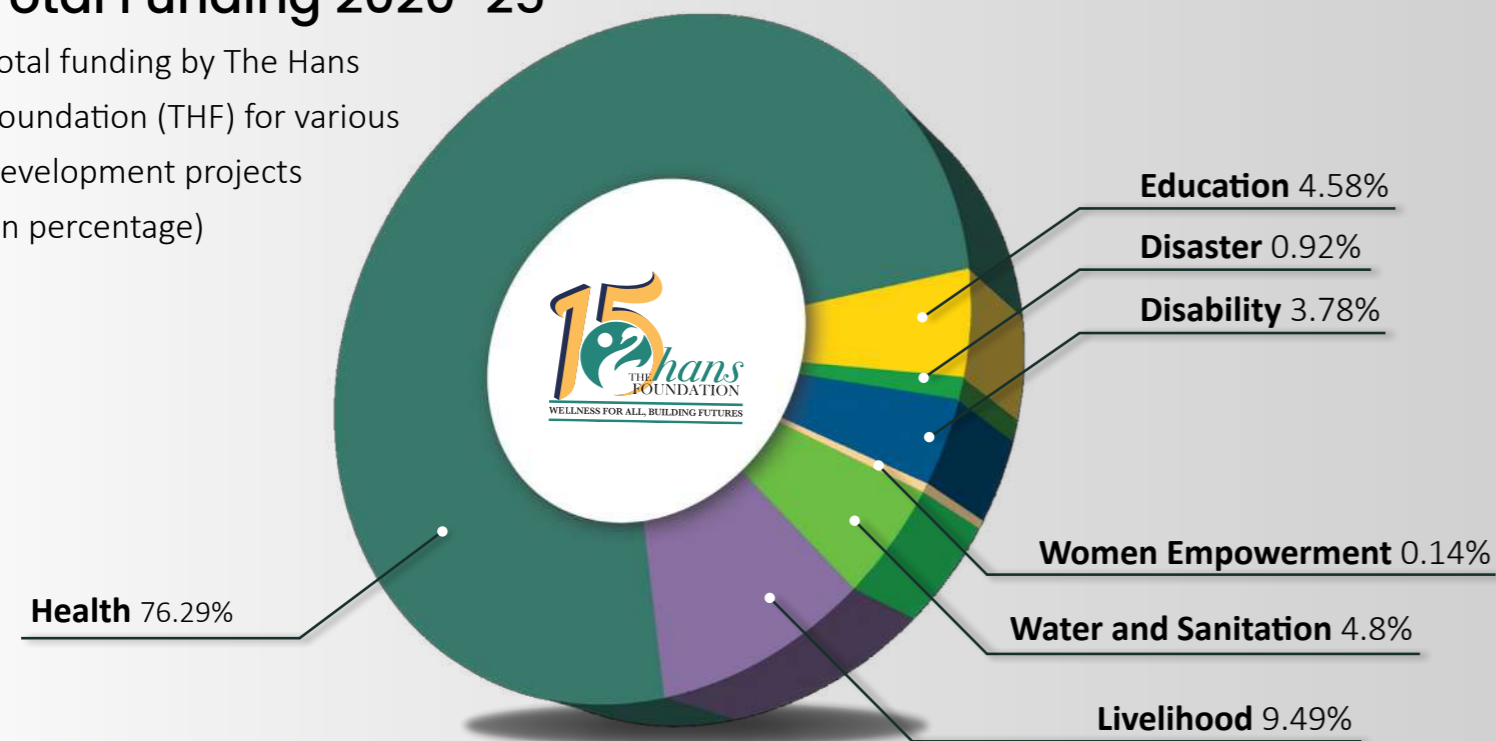
A similar scholarship program has been launched with IIM Udaipur, supporting 20 women and students with disabilities to pursue management education. Together, these initiatives are helping build a more diverse and equitable pipeline of young professionals ready to contribute to India's future.



Financial Review

Total Funding 2020-25

Total funding by The Hans Foundation (THF) for various development projects
(In percentage)



Year-wise Total Expenditure 2020-25

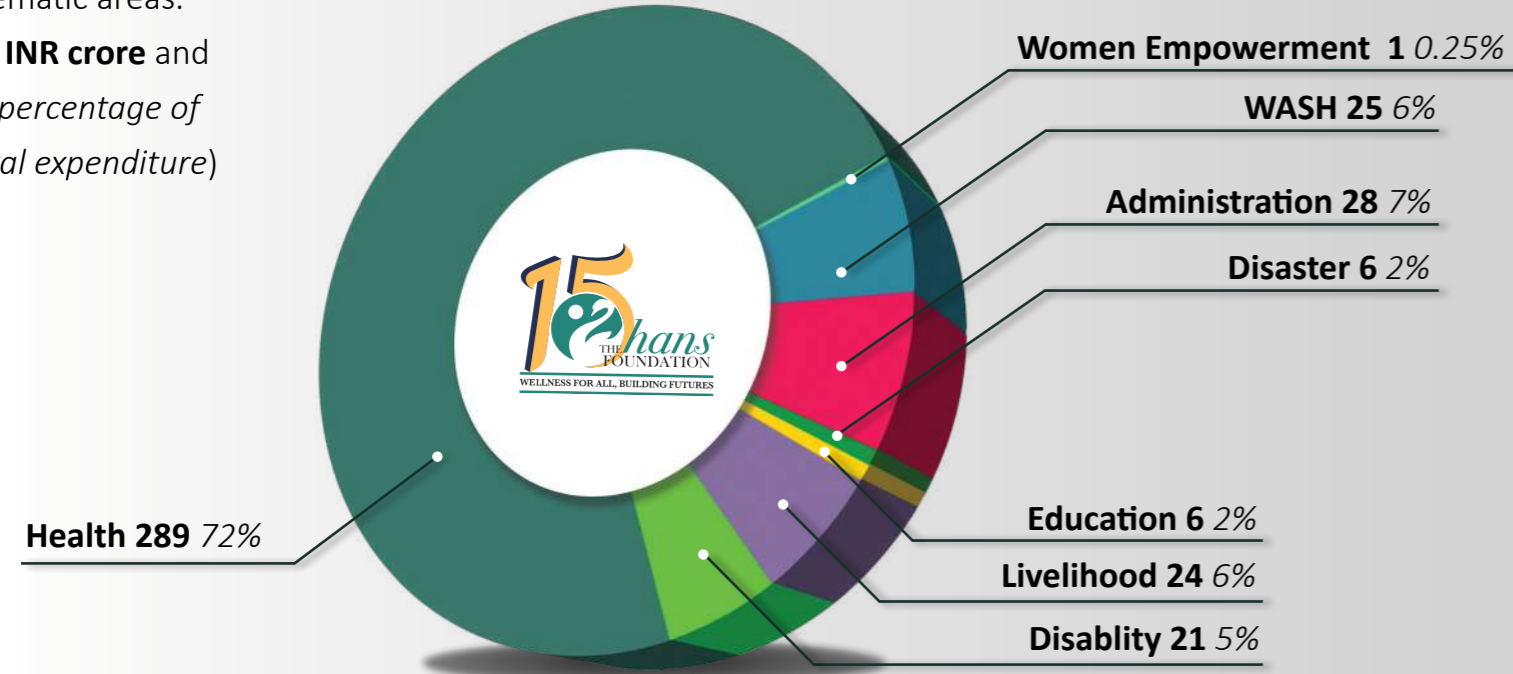
Year wise total expenditure by The Hans Foundation (THF) during the period 2020-2025
(In INR crore)



Expenditure FY2023-24

Total expenditure by The Hans Foundation (THF) on various thematic areas.

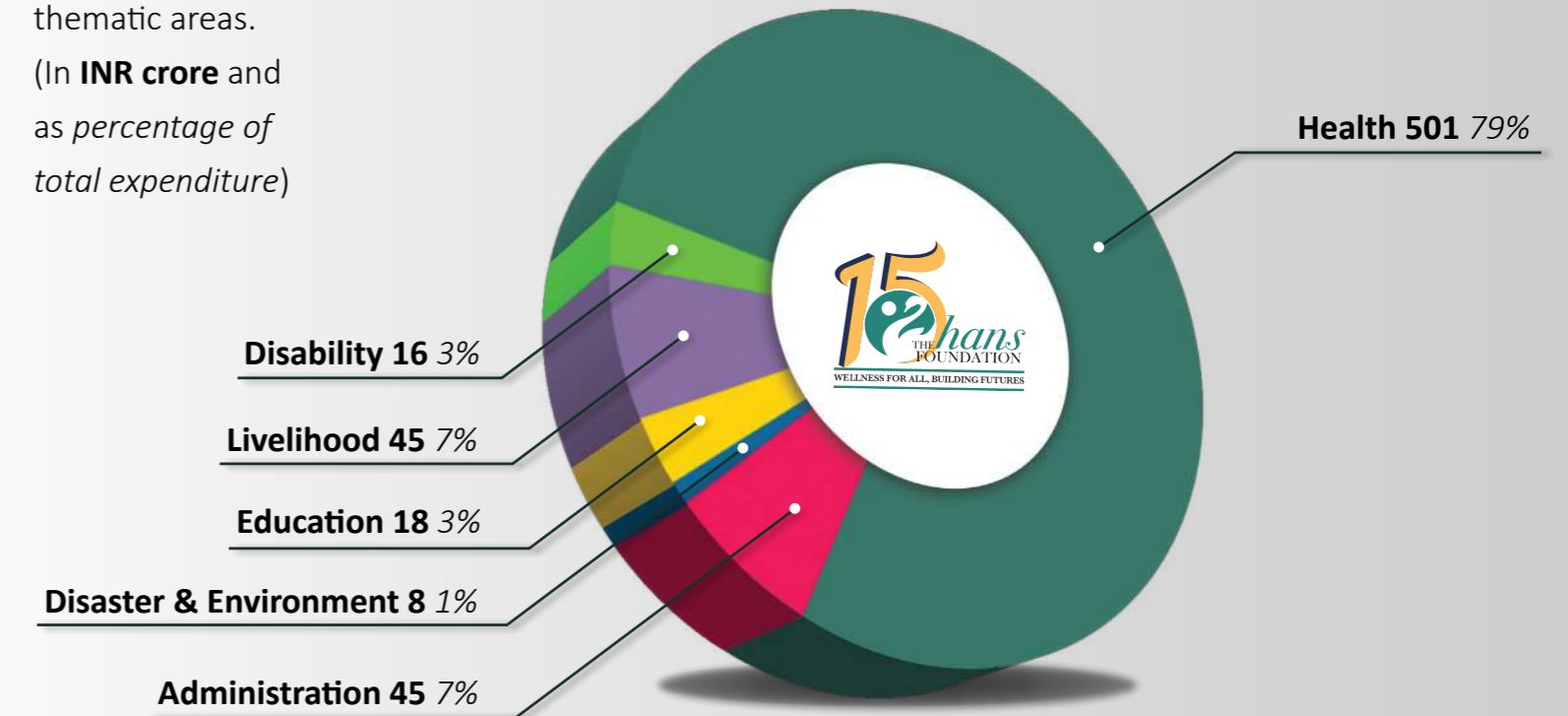
(In **INR crore** and as percentage of total expenditure)



Expenditure FY2024-25

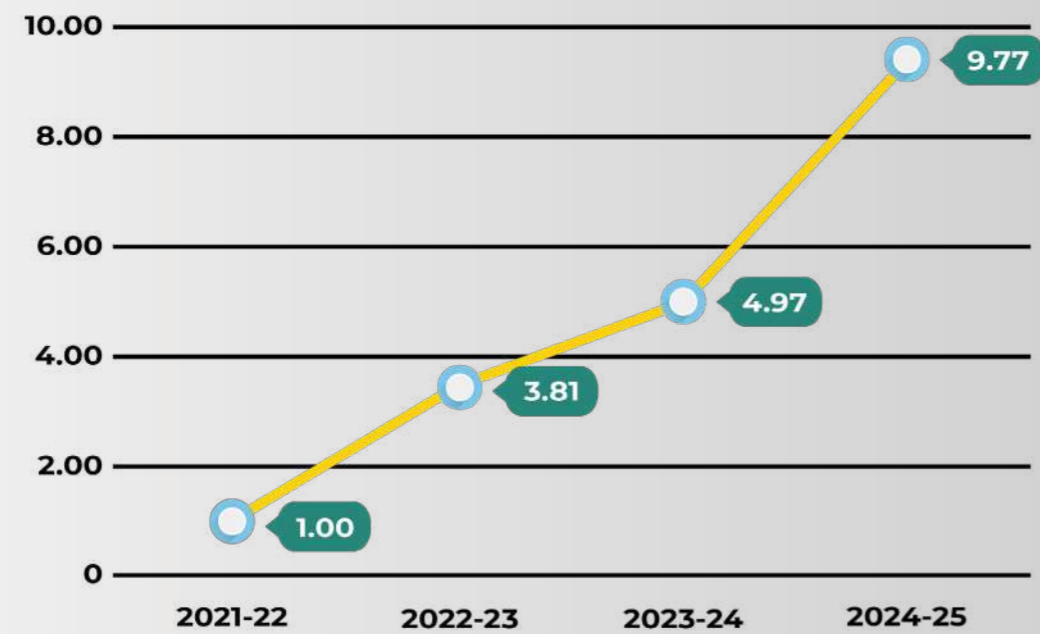
Total expenditure by The Hans Foundation (THF) on various thematic areas.

(In **INR crore** and as percentage of total expenditure)



Year-wise CSR Expenditure 2021-25

Total expenditure by The Hans Foundation (THF) on CSR during 2021-25 (In INR crore)



Looking Ahead

From Reach to Depth

As The Hans Foundation steps into 2025–26, its focus moves from reach to depth — from expanding coverage to deepening the quality and sustainability of every intervention. The coming year we will further bolster our efforts, ensuring that impact is not only felt but also measured, replicated, and scaled.

Strategic priorities for the upcoming year include:

- Pursue strategic partnerships and funding opportunities with corporates and govt. Institutions across India.

- Strengthen presence in aspirational districts and blocks through focused consolidation and impactful interventions.
- Adopt a multi thematic approach within existing project locations to promote integrated and sustainable development.

Every project will continue to uphold the values of compassion, partnership, and transparency that define THF's ethos. The aim is not merely to implement programs, but to build systems that sustain themselves through community ownership and empowerment.



Acknowledgements

The Hans Foundation (THF) extends heartfelt gratitude to its partners, donors, and field teams for their unwavering commitment and trust. Gratitude also goes to government institutions, civil society organizations, and corporate collaborators whose shared belief in inclusive growth continues to strengthen the foundation’s mission.

To every healthcare worker, teacher, artisan, volunteer, and team member who brings these programs to life- your dedication remains the heart of every success. Together, we reaffirm our promise to build an India where compassion is action, and every life touched becomes a story of dignity and hope.

Our Government Partners



Our Corporate Partners



Stay updated on our impact



Instagram



LinkedIn



Facebook

Scan & donate - be part of a
compassionate change

